



www.AntibodyResearch.com

**Antibody Research Corporation**

5988 Mid Rivers Mall Drive

St Charles, MO 63304

Phone: (636) 734-0192

Fax: (636) 441-6881

[info@antibodyresearch.com](mailto:info@antibodyresearch.com)

---

## Anti-UBC12 Rabbit Polyclonal Antibody

<b>Catalog No.:</b>	1001
<b>Gene Name:</b>	UBE2M
<b>Alternate Names:</b>	HUBC12; UBC-RS2; UBC12; Ubiquitin-conjugating enzyme E2M; Ubiquitin-protein ligase M; Ubiquitin carrier protein M; and Nedd8-conjugating enzyme Ubc12
<b>Description:</b>	UBC12 is a member of the E2 Ubiquitin-conjugating enzyme family. Modification of proteins with Ubiquitin or ubiquitin like proteins has important cellular functions. These modifications involve at least three classes of enzymes namely activating enzyme or E1, conjugating enzymes or E2, and protein ligases or E3. UBC12 is involved in the conjugation of NEDD8 to proteins such as Cdc53/Cullin.
<b>Protein Source:</b>	Homo Sapiens
<b>Immunogen:</b>	169-180aa peptide of human UBC12
<b>Antibody Source:</b>	Rabbit
<b>Antibody Purity:</b>	Affinity Purified
<b>Clonality:</b>	Polyclonal
<b>Format:</b>	100µg in 0.1mL in Phosphate-Buffered Saline.
<b>Uses (Verified):</b>	ELISA & Western blot, others not tested. Suggested dilution 1:10,000 for ELISA and 1:2000 for Western.
<b>Storage:</b>	4°C for short term and -20°C for long term. Avoid frequent freeze and thaw.
<b>Stability:</b>	12 months at -20°C.
<b>Shipping:</b>	Products may be shipped on ice pack.

**For Research Use Only. Not for Diagnostic or Therapeutic Work.**

ARC will not be held responsible for patent infringement or other violation that may occur with the use of our product.

---



www.AntibodyResearch.com

**Antibody Research Corporation**

5988 Mid Rivers Mall Drive

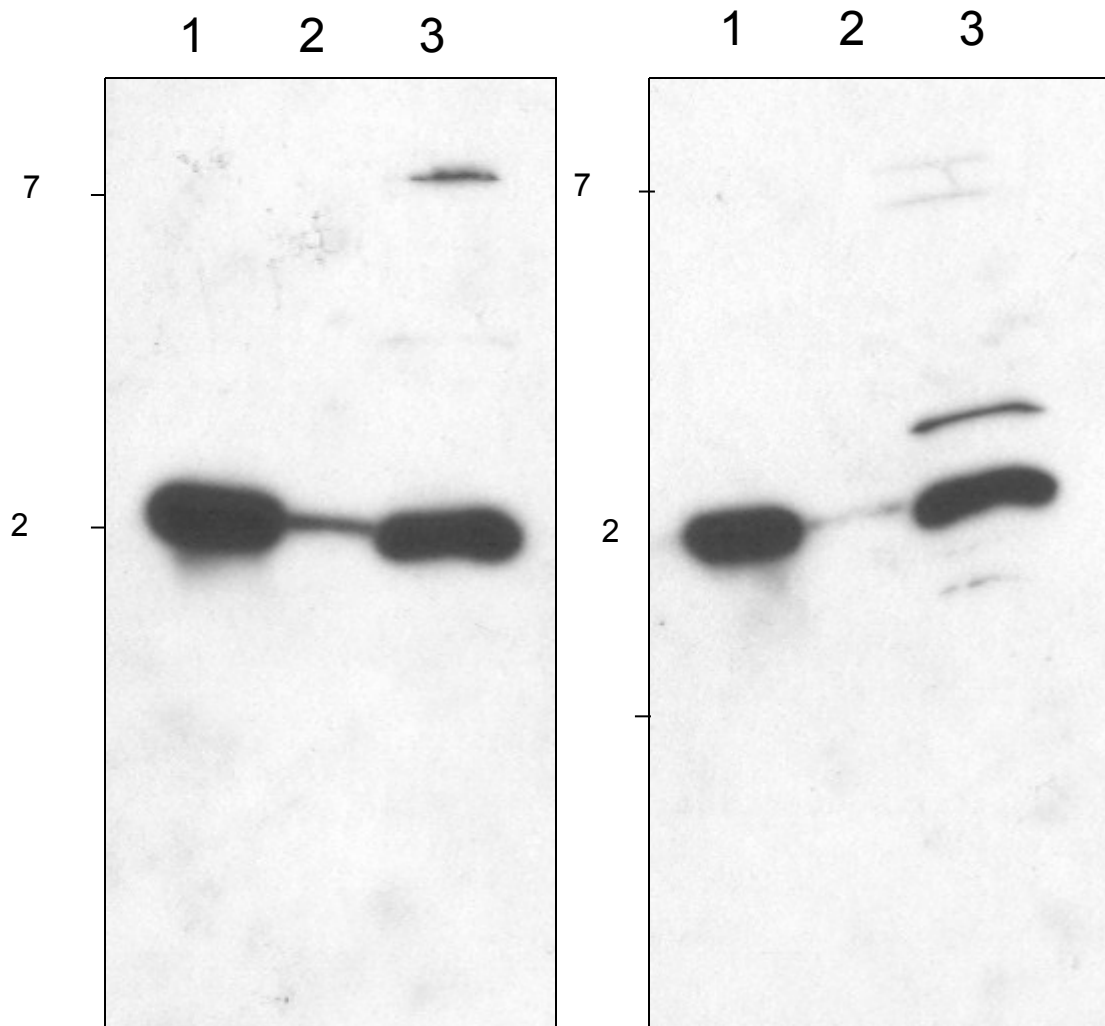
St Charles, MO 63304

Phone: (636) 734-0192

Fax: (636) 441-6881

[info@antibodyresearch.com](mailto:info@antibodyresearch.com)

### Western Blot Data



**Antibody Research Corp**  
**1: 4000**

**Competitor**  
**1: 1000**

**Figure-1:** Purified 10ng and 1 ng UBC12 used in lanes 1 and 2 respectively. HeLa cell extracts used in lane 3. ARC antibody or the competitor antibody used at indicated dilutions.